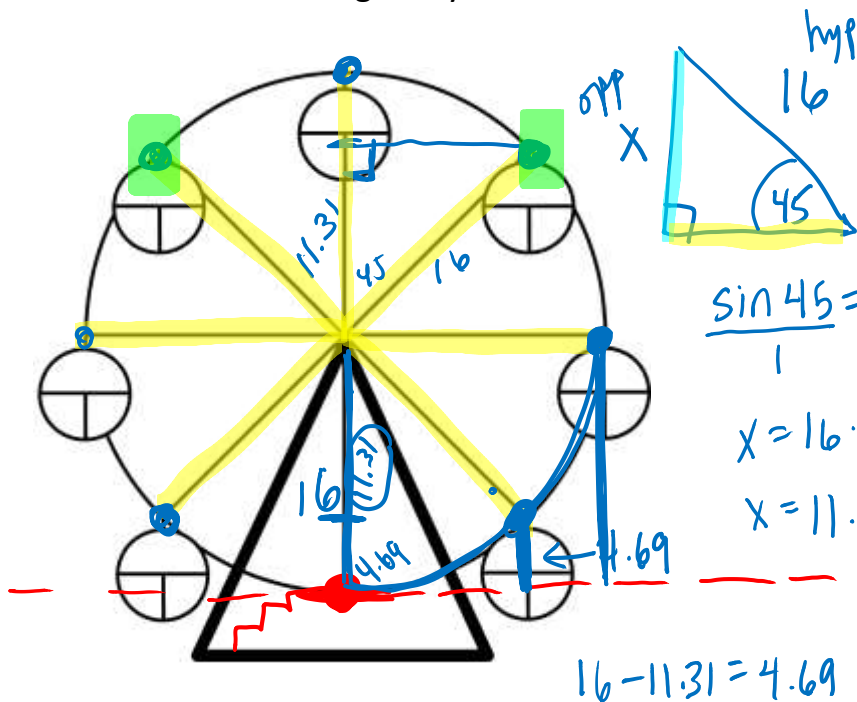


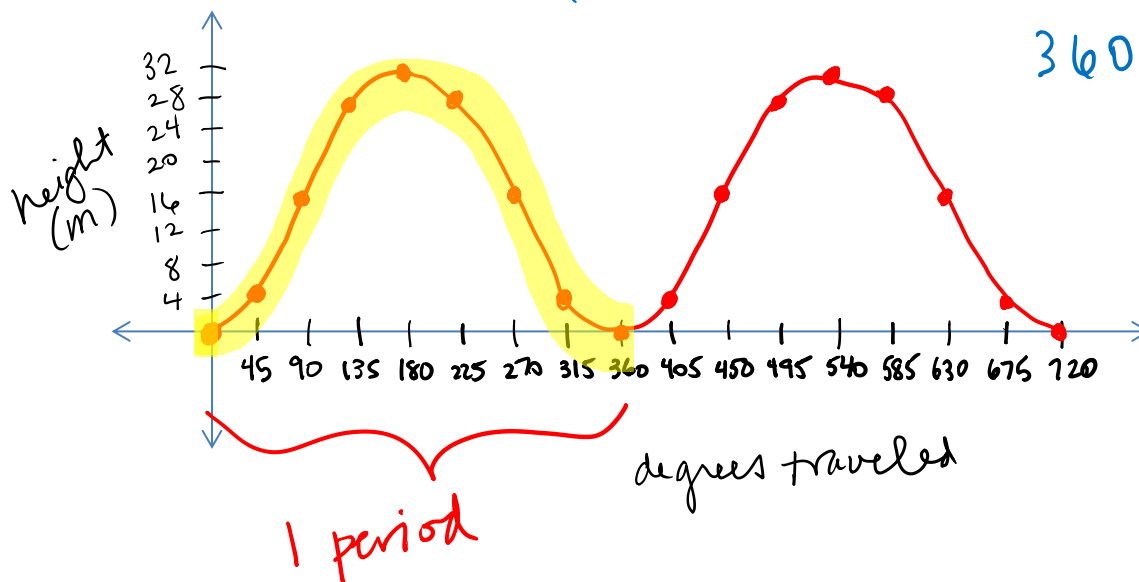
Section 14.1 NOTES

Graphing Trig Functions – Day 1

Suppose you are on a Ferris wheel. You get on at the bottom. Graph your height with respect to the number of degrees you have traveled.



Degrees travelled	Height off the ground
0	0
45	4.69
90	16
135	27.31
180	32
225	27.31
270	16
315	4.69
360	0



The **PERIOD** of a function is "how long" it takes for the function to make one full "rotation."

What is the **period** of the Ferris Wheel problem? 360°

Write the period for each function. *period = distance, so it is always, POSITIVE!*

